



TOWNSHIP OF FAIRFIELD

2012

RECYCLING AND REFUSE COLLECTION SCHEDULE



**PLEASE READ THIS CIRCULAR CAREFULLY AND
KEEP IT FOR FUTURE REFERENCE**

General Rules for Curbside Collection

All items must be placed at curbside (**not in the street**) the evening before the scheduled collection day. Recyclables and grass should be placed separately from all other items placed at curbside.



The township will continue to collect the following items at curbside in all residential areas on scheduled days: glass, aluminum, plastic, newspapers and leaves. In addition, there will continue to be special collection days scheduled for pick up by the township's contractors for bulk goods, metal and white goods. All these items will be collected together (see BULK DAY). The township will continue its recycling drop off center at Town Hall.

Collection by Contractor

The following items will be collected at curbside by the township's chosen contractor and should be placed at the curb (**not on the street**) the evening before the day of scheduled pickup.

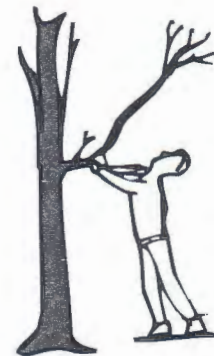
NOTE: RESIDENTS & LANDSCAPERS - Do not use leaf blowers during the year to blow grass, leaves or other debris into the street, gutter or storm drains. All grass, leaves or other debris must be swept up and disposed of properly. Do not block mailboxes, storm drains or fire hydrants.



Christmas Tree Pick-Up

Christmas trees will be picked up on regular garbage days starting January 3.

Brush



The township refuse contractor will collect brush on your regularly scheduled Bulk garbage day. All branches must be cut to 4 ft. lengths, with a maximum diameter of 4 inches. They must be tied in bundles not heavier than 60 lbs. Yard waste and small branch clippings of 1 foot or less may be bagged, plastic bags only, marked yard waste (no soil or rocks). Grass clippings and leaves must not be mixed with regular garbage.

Note: Root balls must be removed from shrubs and trees, and should be put at the curb on Bulk days. They must be manageable size, free of dirt and not heavier than 60 lbs. Trees or shrubs removed by a homeowner or contractor will be the responsibility of the homeowner or contractor to dispose of.

Bulk Day

The township refuse contractor will pick up bulk items twice a month throughout each garbage zone (see schedule). This will include all items of bulky nature, mattresses, console TV, lawn and house furniture, rugs (cut, rolled and tied in 4 ft. lengths), white goods and metal, construction materials from small homeowner projects such as lumber, doors (all lumber and pipe must be cut to 4 ft. lengths and tied and bundled), windows, roofing, concrete, bricks, sheetrock, siding, etc., in small amounts. This does not include complete roofs, kitchen and bathroom renovations, or other large projects, requiring a dumpster. Refuse from these larger projects is the responsibility of the homeowners to obtain a dumpster. Materials such as tile, concrete, sheetrock, bricks, etc., must be broken up and placed in a suitable container weighing no more than 60 lbs. (no bags or boxes). Only 4 items, containers or bundles may be placed at the curb at each pickup.

Remember: Freon from refrigerators and air conditioners must be removed and tagged by a certified technician. Please remove doors from all appliances.

KEEP BULK
ITEMS
SEPARATE FROM
GRASS

COLLECTION BY TOWNSHIP D.P.W.

The following items will be collected at curbside by the township's D.P.W. and should be placed at the curb (not in the street) the evening before the day of scheduled pickup.

Co-mingled Glass, Plastic & Aluminum: by D.P.W.

Mixed glass and aluminum should be placed in recycling buckets or similar containers not larger than 20 gallons. Metal drums, bags, boxes, or other non-reusable containers are not acceptable. The township will not pick up any recyclables that are mixed with garbage, plate glass, aluminum foil, pie plates, mirrors, etc.

Newspaper: by D.P.W.

The township will collect newspapers, magazines, phone books or paper at curbside on scheduled days. These items should be tied and bundled or placed in paper bags not weighing more than 30 lbs. Plastics, bags or loose papers in cans will not be accepted.

Leaves: by D.P.W.

The township's D.P.W. will pickup leaves from October 15 until December 17 throughout the town. Leaf collection will be repeated several times throughout all areas of the town and should take from one to two weeks between collections. Due to the unpredictability of falling leaves, there will be no set schedule for leaf pickup. Leaves should be raked to the street along the curb. All leaves are to be kept 10 feet from storm drains. Homeowners or their landscape contractors wishing to bag leaves must use biodegradable paper bags only. Plastic bags, or any other containers, will not be accepted. Branches, shrubs, grass or other yard waste should not be mixed with leaves.

ALL LEAVES MUST
BE BAGGED AFTER
DECEMBER 17

NOW ACTIVE FAIRFIELD REVERSE 911 SYSTEM

The REVERSE 911 System can be used for many things. The primary use is for EMERGENCY NOTIFICATION in the event of FLOODS, HAZARDOUS MATERIAL INCIDENTS, FIRE INCIDENTS, TERRORIST INCIDENTS, SCHOOL CLOSINGS, ETC.

Secondary use of the System will be for ROAD CLOSINGS, ENGINEERING PROJECTS, POLICY NOTIFICATION, SPECIAL PROJECTS, ETC.

If you have an unlisted phone number and want to be added to the Reverse 911 System, please contact William Smith, OEM Coordinator, at 973-882-2740.

Solutions to Stormwater Pollution

Easy Things You Can Do Every Day To Protect Our Water

A Guide to Healthy Habits for Cleaner Water

Pollution on streets, parking lots and lawns is washed by rain into storm drains, the directly to our drinking water supplies and the ocean and lakes our children play in. Fertilizer, oil, pesticides, detergents, pet waste, grass clippings: You name it and it ends up in our water.

Stormwater pollution is one of New Jersey's greatest threats to clean and plentiful water, and that's why we're all doing something about it.

By sharing the responsibility and making small, easy changes in our daily lives, we can keep common pollutants out of storm water. It all adds up to cleaner water, and it saves the high cost of cleaning up once it's dirty.

As part of New Jersey's initiative to keep our water clean and plentiful and to meet federal requirements, many municipalities and other public agencies including colleges and military bases must adopt ordinances or other rules prohibiting various activities that contribute to storm

water pollution. Breaking these rules can result in fines or other penalties.



As a resident, business, or other member of the New Jersey Community, it is important to know these easy things you can do every day to protect our water.

Limit your use of fertilizers and pesticides

- Do a soil test to see if you need a fertilizer.
- Do not apply fertilizers if heavy rain is predicted.
- Look into alternatives for pesticides.
- Maintain a small lawn and keep the rest of your property or yard in a natural state with trees and other native vegetation that requires little or no fertilizer.
- If you use fertilizers and pesticides, follow the instructions on the label on how to correctly apply it.

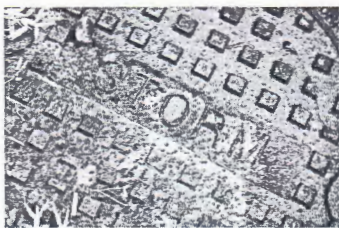


Make sure you properly store or discard any unused portions.

Properly use and dispose of hazardous products

- Hazardous products include some household or commercial cleaning products, lawn and garden care products, motor oil, antifreeze and paints.
- Do not pour any hazardous products down a storm drain because storm drains are usually connected to local water bodies and the water is not treated.

- If you have hazardous products in your home or workplace, make sure you store or dispose of them properly. Read the label for guidance.
- Use natural or less toxic alternatives when possible.
- Recycle used motor oil.
- Contract your municipality, county or facility management office for the locations of hazardous-waste disposal facilities.



Keep pollution out of storm drains

- Municipalities and many other public agencies are required to mark certain storm drain inlets with messages reminding people that storm drains are connected to local water bodies.
- Do not let sewage or other wastes flow into a storm water system.

Clean up after your pet

- Many municipalities and public agencies must enact and enforce local pet-waste rules.
- An example is requiring pet owners or their keepers to pick up and properly dispose of pet waste dropped on public or other people's property.
- Make sure you know your town's or agency's requirements and comply with them. It's the law. And remember to:
 - Use newspaper, bags or pooper-scoopers to pick up wastes.
 - Dispose of the wrapped pet waste in the trash or unwrapped in a toilet.
 - Never discard pet waste in a storm drain.

Don't feed wildlife

- Do not feed wildlife, such as ducks and geese, in public areas.
- Many municipalities and other public agencies must enact and enforce a rule that prohibits wildlife feeding in these areas.

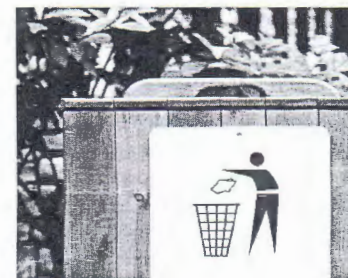


Dispose of yard waste properly

- Keep leaves and grass out of storm drains.
- If your municipality or agency has yard waste collection rules, follow them.
- Use leaves and grass clippings as a resource for compost.
- Use a mulching mower that recycles grass clippings into the lawn.

Don't litter

- Place litter in trash receptacles.
- Recycle. Recycle. Recycle.
- Participate in community cleanups.



Contact information

For more information on storm water related topics, visit www.njstormwater.org or www.nonpointsource.org.

Additional information is also available at US Environmental Protection Agency websites www.epa.gov/npdes/stormwater or www.epa.gov/nps.

New Jersey Department of Environmental Protection
 Division of Water Quality
 Bureau of Nonpoint Pollution Control
 Municipal Stormwater Regulation Program
 (609) 633-7021



REAR YARD EASEMENTS

Residents with rear yard easements for drainage are reminded of the regulations pertaining to easements. It is the property owner's responsibility to maintain this property so that storm water may flow into basins. An easement merely grants the Township the right to enter upon the property to make repairs. It is not the Township's responsibility to maintain and keep these easements clear. Residents are reminded that they are not to infringe upon these easements with fences, sheds, gardens or other obstructions which may obstruct the flow of storm water.

Additionally, should the Township be required to enter along this easement to make repairs, the Township is not required to replace shrubs, plantings, fences or other obstructions, which have infringed upon the easement.



DROP-OFF CENTER



The following schedule will be for the dropoff of the recycling items listed below. **NOTICE:** Anyone apprehended dumping anything other than the listed items or drumming when the center is closed will be fined.

Due to insurance regulations, it is necessary to restrict the hours of operation and the items dropped off.

Hours of Operation:

Monday through Friday 7:00 a.m. to 3:45 p.m.
Saturday 8:00 a.m. to 12:00 noon
Sunday and Holidays 10:00 a.m. to 2:00 p.m.
CLOSED THANSIVING AND CHRISTMAS

Note: All bags and boxes used for transporting recyclables must be placed in garbage cans provided.

Glass: Green, brown or clear bottles and jars – no mirrors, plate glass, dishes, china or blue and white glass. No plastic or paper bags or boxes.

Tin or Aluminum: Beverage, soup, juice, pet food cans, etc. No tin foil, pie plates or pots and pans. No bags or boxes.

Plastic: Any container with #2 marked on bottom. Milk, soda, detergent containers, etc. No toys, plastic furniture, bags or boxes.

Newspaper/Cardboard: Stacked and folded. No bags.

Waste Oil: Motor oils only. No transmission fluid, anti-freeze, break fluid or gasoline. (No commercial businesses.)

Batteries: Car, truck and boat batteries. (No commercial businesses.) 7:00 a.m. to 3:00 p.m. weekdays only. Call 973-882-2734.

Tires: No longer accepted. Residents should dispose of privately; i.e., service stations, tire dealers.

2012

BULK AND RECYCLING SCHEDULES

If your household garbage pickup is Monday and Thursday, all bulk items will be picked up on the following days: 1st and 3rd Wednesday of each month.

January		February		March	
Date	Materials	Date	Materials	Date	Materials
Wednesday 4	Bulk	Wednesday 1	Bulk	Wednesday 7	Bulk
Wednesday 18	Bulk	Wednesday 15	Bulk	Wednesday 21	Bulk
April		May		June	
Date	Materials	Date	Materials	Date	Materials
Wednesday 4	Bulk	Wednesday 2	Bulk	Wednesday 6	Bulk
Wednesday 18	Bulk	Wednesday 16	Bulk	Wednesday 20	Bulk
July		August		September	
Date	Materials	Date	Materials	Date	Materials
Thursday 5*	Bulk	Wednesday 1	Bulk	Wednesday 5	Bulk
Wednesday 18	Bulk	Wednesday 15	Bulk	Wednesday 19	Bulk
October		November		December	
Date	Materials	Date	Materials	Date	Materials
Wednesday 3	Bulk	Wednesday 7	Bulk	Wednesday 5	Bulk
Wednesday 17	Bulk	Wednesday 21	Bulk	Wednesday 19	Bulk

If your household garbage pickup is Tuesday and Friday, all bulk items will be picked up on the following days: 2nd and 4th Wednesday of each month.

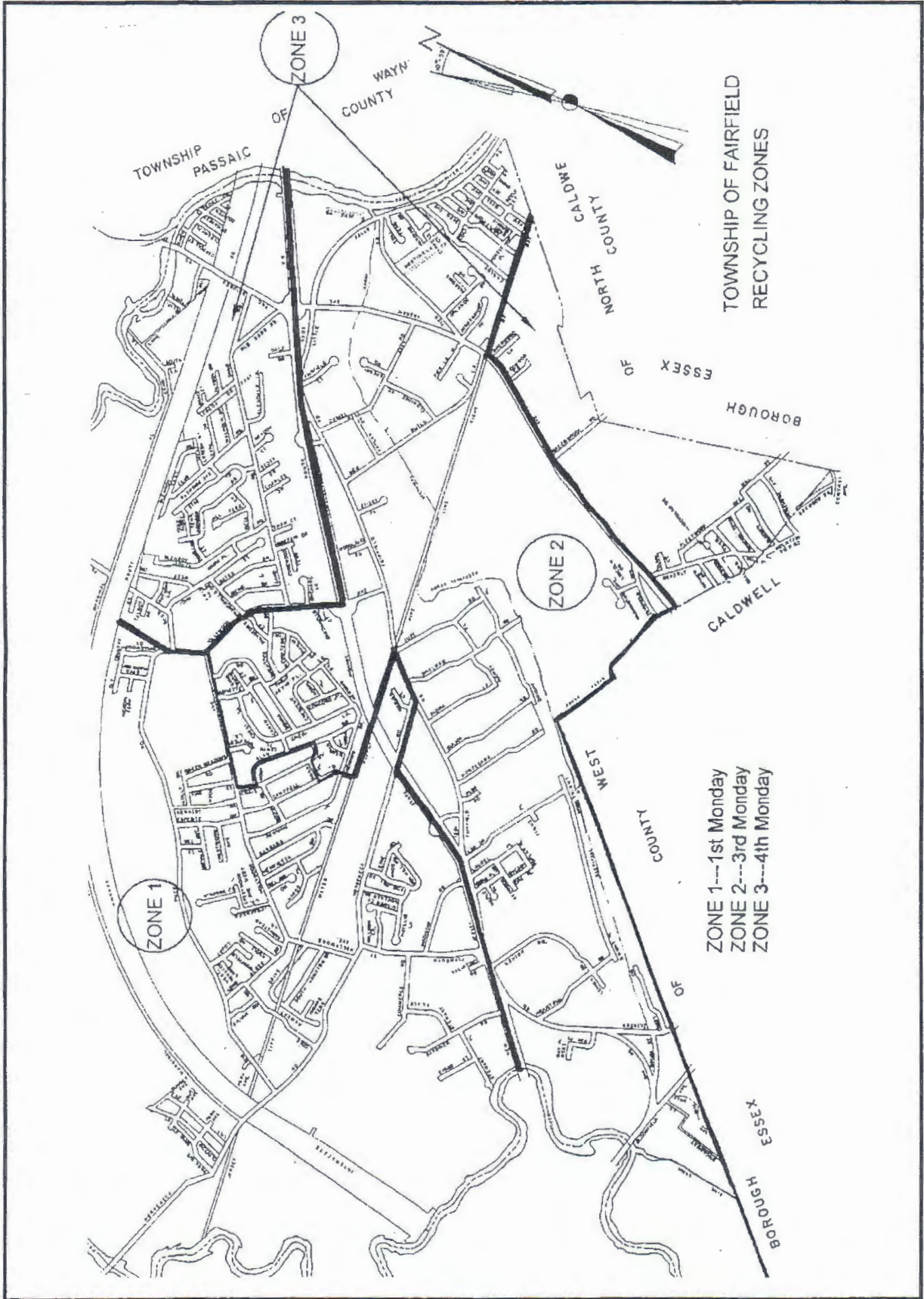
January		February		March	
Date	Materials	Date	Materials	Date	Materials
Wednesday 11	Bulk	Wednesday 8	Bulk	Wednesday 14	Bulk
Wednesday 25	Bulk	Wednesday 22	Bulk	Wednesday 28	Bulk
April		May		June	
Date	Materials	Date	Materials	Date	Materials
Wednesday 11	Bulk	Wednesday 9	Bulk	Wednesday 13	Bulk
Wednesday 25	Bulk	Wednesday 23	Bulk	Wednesday 27	Bulk
July		August		September	
Date	Materials	Date	Materials	Date	Materials
Wednesday 11	Bulk	Wednesday 8	Bulk	Wednesday 12	Bulk
Wednesday 25	Bulk	Wednesday 22	Bulk	Wednesday 26	Bulk
October		November		December	
Date	Materials	Date	Materials	Date	Materials
Wednesday 10	Bulk	Wednesday 14	Bulk	Wednesday 12	Bulk
Wednesday 24	Bulk	Wednesday 28	Bulk	Wednesday 26	Bulk

2012 Schedule for Aluminum, Glass, Plastic and Newspaper

January		February		March	
Date	Materials	Date	Materials	Date	Materials
Tuesday 3*	Glass Zone 1	Monday 6	Glass Zone 1	Monday 5	Glass Zone 1
Monday 9	Newspaper (all)	Monday 13	Newspaper (all)	Monday 12	Newspaper (all)
Monday 16	Glass Zone 2	Tuesday 21*	Glass Zone 2	Monday 19	Glass Zone 2
Monday 23	Glass Zone 3	Monday 27	Glass Zone 3	Monday 26	Glass Zone 3
April		May		June	
Date	Materials	Date	Materials	Date	Materials
Monday 2	Glass Zone 1	Monday 7	Glass Zone 1	Monday 4	Glass Zone 1
Monday 9	Newspaper (all)	Monday 14	Newspaper (all)	Monday 11	Newspaper (all)
Monday 16	Glass Zone 2	Monday 21	Glass Zone 2	Monday 18	Glass Zone 2
Monday 23	Glass Zone 3	Tuesday 29*	Glass Zone 3	Monday 25	Glass Zone 3
July		August		September	
Date	Materials	Date	Materials	Date	Materials
Monday 2	Glass Zone 1	Monday 6	Glass Zone 1	Tuesday 4*	Glass Zone 1
Monday 9	Newspaper (all)	Monday 13	Newspaper (all)	Monday 10	Newspaper (all)
Monday 16	Glass Zone 2	Monday 20	Glass Zone 2	Monday 17	Glass Zone 2
Monday 23	Glass Zone 3	Monday 27	Glass Zone 3	Monday 24	Glass Zone 3
October		November		December	
Date	Materials	Date	Materials	Date	Materials
Monday 1	Glass Zone 1	Monday 5	Glass Zone 1	Monday 3	Glass Zone 1
Monday 8	Newspaper (all)	Monday 12	Newspaper (all)	Monday 10	Newspaper (all)
Monday 15	Glass Zone 2	Monday 19	Glass Zone 2	Monday 17	Glass Zone 2
Monday 22	Glass Zone 3	Monday 26	Glass Zone 3	Monday 24	Glass Zone 3

*Change due to holiday

TOWNSHIP OF FAIRFIELD RECYCLING ZONES



Permits

Residents are reminded that permits are required for the following:

- SHEDS
- DECKS
- POOLS
- ROOF
- SIDING
- FENCES
- SOIL MOVING OR GRADING
- REPAIRS TO SIDEWALKS AND CURBING
- DRIVEWAY CONSTRUCTION OR RESURFACING

Other special permits may be required if your property is located in a flood zone. If you have a question, please call the Building Department at 973-882-2730 or the Engineering Department at 973-882-2725.

Your Litter Responsibility Under the Law



Residential Requirements

1. No person shall sweep into or deposit litter or debris in any gutter.
2. No driver or passenger shall throw or deposit litter upon any street or other public place.
3. No person shall throw or deposit litter in any park except in proper litter receptacle.
4. Persons owning or occupying property shall keep the sidewalk in front of their premises free of litter and snow.

Dog owner shall immediately remove and dispose of any feces deposited by such dogs in public places by a sanitary manner.

Commercial Requirements

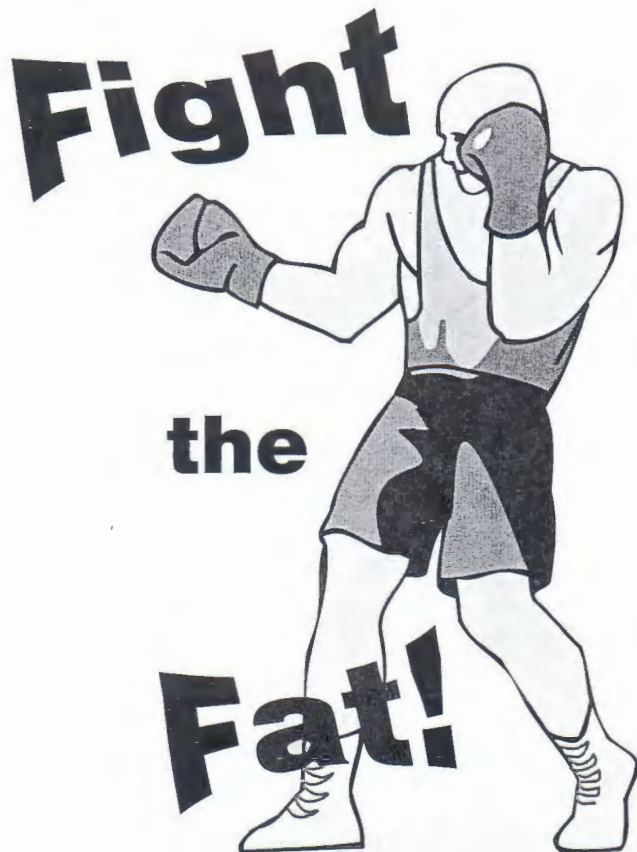
1. Merchants, owner and occupants must sweep sidewalk and remove litter daily. Debris should be collected and stored in a receptacle. No litter should be placed in the gutter.
2. All construction sites must have an adequate container for debris. All containers must be emptied on a regular basis.
3. Owners of the following businesses are required to have a litter receptacle outside for their patrons.
 - Gasoline service platform islands
 - Shopping centers
 - Parking lots
 - Self-service refreshment areas

HOUSEHOLD GARBAGE COLLECTION



Household garbage will be collected in designated areas on scheduled days. All receptacles, containers or bags must be placed at the curb (**NOT IN THE STREET**) the night prior to scheduled pickup. They shall not weigh more than 60 lbs. or be more than 32 gallons in size. Each receptacle or container must have a suitable cover. Each household will be limited to four (4) receptacles, containers or bags per pickup. As household garbage days occasionally overlap with other curbside days, it is necessary to clearly separate household garbage from grass, bulk and recyclables since they may be collected by different contractors.

Help Prevent Plumbing Blockages and Sanitary Sewer Backups!



Don't Pour Grease Down Your Drain!

50% of the overflows and blockages in the Fairfield sanitary sewer systems is caused by grease buildup.

If washed down the drain, fat, oil and grease cool and stick to the inside of pipes. Over time, this grease builds up, blocks the pipe and clogs your plumbing. When it is cleared out of the plumbing, the fat moves into the sanitary sewer system, causing even more blockages.



And in case you DO have a sewer backup, call us first.

Normal Hours of Operation:

973-882-2734
Monday through Friday
7:00 a.m. to 3:30 p.m.

**After Hours, Please Contact
the Fairfield Police Department:**

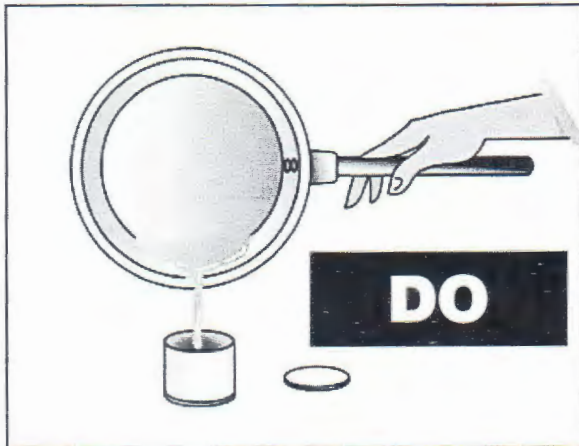
973-227-1400

WHEN SEWERS ARE CLOGGED

- ◆ Raw sewage overflows into streets, parks, onto property and...
- ◆ Other customers are prevented from using the system.
- ◆ Residential, commercial, institutional and industrial operations are disrupted.
- ◆ Plumbing system stoppages are generally the responsibility of the property owner or tenant.
- ◆ Potential contact with disease-causing organisms increases.
- ◆ Sanitary sewer operation and maintenance costs go up, affecting your bill.

Use a Fat Can!

Garbage disposals do not stop grease from entering the plumbing or sanitary sewers. Pour cooled grease and food scraps into a can and put it in the trash. Controlling grease at its source goes a long way toward eliminating blockages and backups that result from grease buildup.



OTHER THINGS YOU CAN DO TO HELP

- ◆ Use a basket or strainer in sinks to catch food scraps and other solids. All food scraps, even those processed through a garbage disposal, have the potential to cause blockages in plumbing and sewer lines.
- ◆ Spread the message to your friends and neighbors about keeping grease out of their plumbing and out of sewers.
- ◆ Watch your sinks and toilets for proper draining and flushing.
- ◆ Routinely clean and service restaurant grease traps and interceptors.

Not for Drains or Toilets!

These items can cause blockages or otherwise damage the sewer system. Please avoid putting them down your drains and toilets:

- Disposable diapers
- Sanitary napkins
- Tampons/applicators
- Paper towels
- Insecticides*
- Cleaners/solvents*
- Paint/thinners*
- Pool chemicals*
- Hobby supplies*
- Used motor oil*
- Hair
- Wax
- Antifreeze
- Kitty litter
- Baby wipes
- Pesticides*
- Fertilizers*
- Fuels*
- Herbicides*
- Household batteries*

Above substances marked with an asterisk can be disposed of by homeowners by contacting:

Essex County Utilities Authority
973-857-2350

Homeowners' Responsibility

It is the responsibility of all homeowners to properly discard any and all material*, such as hazardous materials, not picked up at curbside by the refuse contractor. The homeowner is also responsible for items not accepted on bulk day. Residents may call these numbers for information on hazardous waste disposal.

Essex County Utilities Authority
973-857-2350

Fire Prevention Bureau
973-882-2735

*Hazardous Materials: Paints and thinners, propane tanks, pesticides and lawn chemicals, gas and diesel fuel, cleaning fluids, acid, etc.

Grass Collection

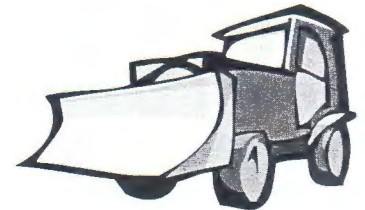
On Wednesday, April 18, the Township's chosen contractor will begin grass collection throughout the town. This will continue every Wednesday until October 17.

- ◆ Loose grass should never be placed at the curb, not even during leaf pickup.
- ◆ Grass must be in biodegradable paper bags only (no plastic bags).
Grass may also be put in plastic containers no larger than 20 gallon (no metal drums or large garbage cans).
- ◆ Homeowners are permitted to mix leaves with grass; however, they must be bagged. Yard waste such as twigs, branches, soil or garden plants will not be accepted.
- ◆ Bags or containers should be placed at the curb Tuesday evenings and should be kept separate from other household garbage or recycling containers.
- ◆ Bags or containers should not be placed in roadways.
- ◆ Questions? Call 973-882-2734 or 973-882-2725.



SNOW REMOVAL

In an effort to remove snow as quickly and safely as possible from Township roadways, the Department of Public Works requires all residents to follow these guidelines.



No parking on snow-covered streets.

Do not leave garbage cans, recyclables, or any other item on snow-covered streets.

When cleaning driveways or sidewalks, residents should not discharge snow into streets.

Whenever possible, wait for snow plow crews to complete your street before cleaning driveways, walkways or mailboxes. Remember during a heavy snowfall, it may be necessary for crews to return to your area a second or third time.

The Township is not responsible for damage to items left in roadways or for vehicles plowed in that were left in roadways.

Remember: It is necessary for plows to push the snow as close to the curb as possible to assure clear passage in future storms. The D.P.W. asks residents to be patient as crews will be working throughout the night until all streets are cleaned.

SALTING – Township roadways will be salted in the following order of priority:

1. Steep grades or hilly sections.
2. Main or heavily traveled through-streets.
3. Intersections.
4. Secondary or back streets whenever possible.
5. Remember, during material shortages, all streets may not be salted, so drive carefully at all times during and after storms.

NOTE: The Township does not plow or salt State or County roadways.

Clean Communities Program

Mini Grant Program

Grants in the amount of \$300.00 are awarded to eligible non-profit groups based in Fairfield Township for a one-day cleanup of a specific area.

Adopt-a-Road Program

Grants in the amount of \$500.00 are awarded to eligible non-profit groups based in Fairfield Township for maintaining a one-mile portion of a Township road.

Volunteer Groups

That's right – We need your help and support. We can't clean alone. It's our community. Let's clean it together!

ILLEGAL DUMPING

Costs Taxpayers Annually Thousands of Dollars for Cleanup

Contributes to an Unsafe and Unhealthy Environment

What Can You Do to Help Prevent It?

Call Fairfield Township Police 973-227-1400

Give location of the incident and a description and plate number of the vehicle.

“Report Illicit Connections”

Residents are requested to report illicit connections/discharges to the Township's storm water collection system. An illicit connection shall mean any physical or non-physical connection that discharges domestic sewage, non-contact cooling water, process wastewater, or other industrial waste (other than storm water to the municipal separate storm sewer system operated by the Township of Fairfield. Non-physical connections may include, but are not limited to, leaks, flows or overflows into the municipal separate storm sewer system.

Report all illicit connections to:
Office of the Township Engineer at
973-882-2725
